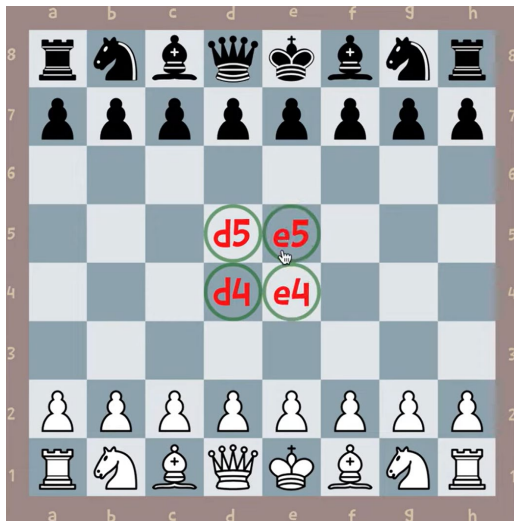


Prairie Chess Club Newsletter: Week 8 Summary

Dear Chess Club Families:

Ridge Chess Club:

This week we went over the phases of chess and focused on the beginning of the game (Openings). Then we matched up by rank and continued to play games vs each other. High school students came up with chess puzzles for students while they waited for the next match.



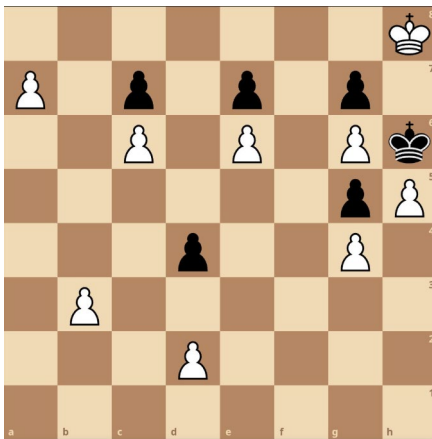
We want to focus on the center of the chess board with our openings.

Puzzle Leaders This Week!

1. Robert Palmer
2. Elijah EcEowen
3. Cooper Giland

Creek Chess Club:

We reviewed the opening game strategy, and then students played games based on rank. In the down time between games puzzles were attempted.



Hint: (Whites Move). Don't always want a queen.

We also went over checkmating with just a rook.

Extra reminder of the time and location:**Prairie Creek (Cafeteria)**

Grades: 5th-8th

Address: 401 76th Ave SW, Cedar Rapids, IA 52404

Start Time: 2:45PM

End Time: 3:30PM

Prairie Ridge (Library)

Grades: 3rd-4th

Address: 278 S Pr Rd SW, Cedar Rapids, IA 52404

Start Time: 4:15PM

End Time: 5:00PM

5th-8th Prairie Chess Club Participants and Families:

It is great to see that the Prairie Chess Club continues to grow and kids are enjoying the experience. As with all clubs and activities, we want that progress to continue. In order to make that possible, at times we have to make some adjustments. One adjustment that is needed at this moment is to ensure participants are picked up in a timely manner. With the conclusion of the chess club at 3:30, it is the expectation that parents are waiting to pick up their child no later than 3:30. This ensures prompt departure so that no additional supervision is needed. Following the conclusion of the chess club at Creek, Coach Josh has to quickly transition to Ridge to lead the elementary chess club and the staff at Creek have other responsibilities. As a result, from this point forward, any chess club participant that is not picked up in a prompt manner (3:45 at the very latest) will be restricted from participating the following week. Thank you for partnering with us to ensure timely pick up and the successful continuation of all chess club participants. Please let me know if you have any questions.

Volunteering and Donation Opportunities:

Creek: If we could find a parent or two that would be up for waiting with kids from 3:30pm to 4pm (we do have some students that have to be picked up later otherwise we will need to implement the plan above from the administration.

Setup a donation page for snacks, stickers, and items for the chess club here:

<https://ia-collegecommunity-lite.intouchrecepting.com/ChessClub>

Were also trying the Amazon Referral Program on the Prairie Chess site:

<https://prairiechessclub.org/store>

Ridge: Is running low on snacks again. Were open to accepting snacks or via the donation link.

Chess Kids Accounts:

Chess kids accounts are available! This is a free online resource that supplements chess club meetings. See the other document on chess kids for how to get access to the accounts. We will be rewarding kids who do the most puzzles next week!

<https://chesskids.com/> - Chess Kids website

Conferences Coming Up on the 11th

No Chess Club on the 11 of November.

Thanks, Josh!