

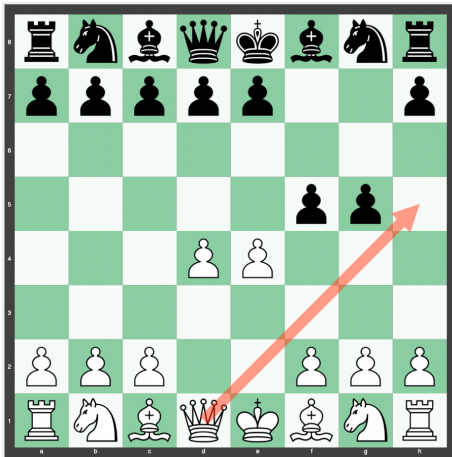
Prairie Chess Club Newsletter: Week 9 Summary

Dear Chess Club Families:

Ridge Chess Club:

This week we reviewed the checks, captures and threats again. It's a phrase we want to think about every time we move. We also went over a few chess puzzles. We started ladder play.

Creek Chess Club:



We went over basic checkmates (the three move checkmate and scholars' mate). We continued ladder play.

Chess Kids Status

Let me know if issues exist with the ChessKids accounts come up! As a reminder, PrairieChessClub.org in the ChessKids section. This is a free resource which will supplement weekly chess club meetings. **We are giving out prizes for the most puzzles attempted!** We were able to get new gold memberships!

Behavior Expectations(We had a incident last week):

We have the same behavior expectations of students during chess club as they do during the school day. Prairie Chess Club volunteers will intervene in any inappropriate behavior that is observed. Prairie Chess Club volunteers will refer such observed incidents to school staff for any action that may be warranted. Parents are encouraged to let me know of any incidents that are not directly observed by the Prairie Chess Club volunteers.

Thanks, Josh!