

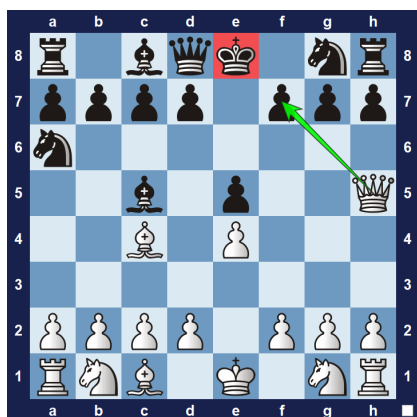
## Prairie Chess Club Newsletter: Week 12 Summary

Dear Chess Club Families:

### Ridge Chess Club:

We split the club into three different groups. Group 1 played vs each other, recorded notation and used clocks. Group 2 went over puzzles/checkmates with our high school volunteers and Group 3 went over basic checkmates. We continued ladder play for everyone.

### Creek Chess Club:



We went over the scholar's mate, and different ways to prevent it. We continued ladder play for everyone afterwards.

### Chess Kids Status

Let me know if issues exist with the ChessKids accounts come up! As a reminder, **PrairieChessClub.org** in the ChessKids section. This is a free resource which will supplement weekly chess club meetings. **We are giving out prizes for the most puzzles attempted!**

### Chess Tournaments Coming up:

<https://www.iowa-chess.org/tournaments-new>

<https://prairiechessclub.org/>

2025 Western Illinois January FIDE Rapid(Jan 25<sup>th</sup>)

- Western Illinois University

2025 Shorewood Hills Chummy Chess Championship(Feb 1<sup>st</sup>)

- 1105 Shorewood Blvd, Madison, WI 53705

Thanks, Josh!